

PRODUCT CATALOGUE

NEW 2026



PROFESSIONAL SOUND SYSTEMS  
[Http://www.khpro.cn](http://www.khpro.cn)



Concert application of large line array products  
--- Shaoguan auto rally party (V2581+V218)

Ck tam and Jacky zhang conceived and launched MG brand audio products with the concept of "sound is science as well as art".



Application of Line Array Systems in KTV Party Rooms  
--- Sky One Party K, Myanmar  
Party K, Prato, Italy  
Night Hub Party K, Guangxi.....



2002 2001 1998



Launched EW15/39.2 and other products

The first line array product for large site application-- Panyu Senmei amusement park center stage(DV281+DV315)



Launched E3015 and other classic products



2003



Fixed installation application of large line array products  
--- Dayantabei square, Xi'an (V2581+V218)



Launched EAGLE and other products

Launched line array application software products C-ONE for performance engineers



Became a member of 5A unit of China performing arts equipment technical association



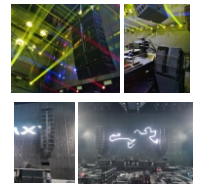
Launched K9 and other products And applied for a patent



Launched GaN gallium nitride amplifiers and multiple products including SYVA active line arrays



2025 2021



Fixed installation applications of large line array products  
--- Sanya EGO Official Live Yulin Galaxy GALAXY CLUB Yunfu W Partyhouse.....

2018



Launched V10/D4160 and other products

Launched K1/V8 and other products



2005 2006 2007 2010 2012 2014 2016

Large line array product rental application  
--- CCTV channel west coast  
CCTV avenue of stars  
Yellow River cultural festival  
Beijing fourth chaoyang pop music week  
Macao's first Portuguese games...



Launched K3/SK2014 and other products and applied for a patent



KTV project digital front level and speaker application--  
Harbin Taipei pure KTV  
Wuhan jinsha international club  
Lanzhou lingxiu pure KTV  
Foshan emgrand international club  
Wuhan diamond world international club.

Installation applications for medium and small wire array products--  
Guangzhou Huameinai music restaurant  
Guangzhou Yudelai international school gymnasium  
Conference hall of southern investment group  
MINI bar in Yulin, Guangxi...



## Company Introduction

KHPRO(KHPRO Professional, KHPRO Audio) -- Guangzhou KHPRO Audio electric co. LTD was established in 2001, committed to professional audio, lighting , KTV song request system and video system's development, production, sales, engineering design and installation and rental project professional system integration enterprise. The company keeps innovating and changing in the industry, over the years the company has accumulated rich experience. At the same time the company continues to inject funds, research integration of systematic structure, and strive to improve the competitiveness of products! And strive to establish a flagship position in the industry.

The company has an experienced and energetic development and sales team, strong scientific research and development technical force, professional, focus, monograph working attitude, won the support and love of many customers, dealers and suppliers. Chinese Mainland, Taiwan and Hong Kong have production department and engineering sales service organizations.

In order to ensure product quality and engineering quality, the company has passed the ISO9000 quality management system certification, "simple, stable, durable" is our product and engineering project requirements. In terms of customer service, we try our best to create high-value products and engineering projects for customers, while providing personalized service platform.

Always think of others, make life more meaningful! Wish we sincerely, mutual encouragement, progress together and create a better tomorrow.....



Factory



Company (GZ, china)

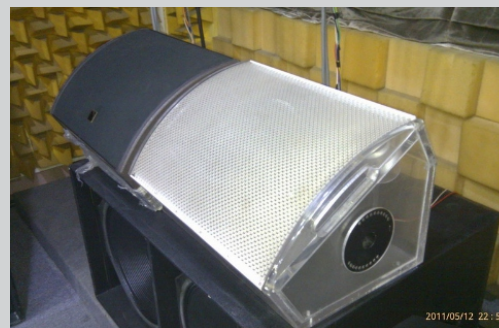


Company (Hong Kong)



Company (Taiwan)

► PURPOSE AND STRUCTURE



**KH<sup>®</sup>  
PRO**  
坤鴻專業

# VIP HAUTE COUTURE

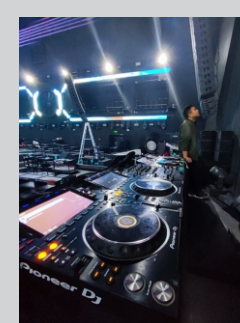
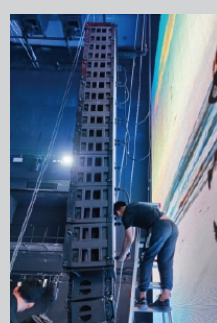
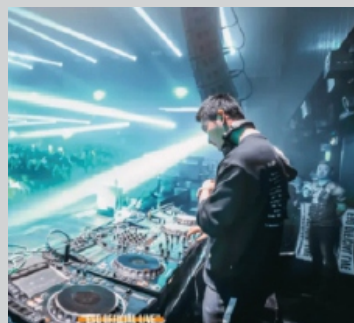
[Http://www.khpro.cn](http://www.khpro.cn)

▼ UNITS AND PARTS



Sound is a profound science. We believe that the more people know about this science, the more the industry will benefit. We have accumulated many years of rich experience in this industry and are happy to share and exchange ideas. In fact, in 2001, we have customized and produced professional speakers for different customers for engineering installations, indoor and outdoor performances, KTV, theme parks and other places.

After years of development, we continue to thrive. This has exceeded our customers' expectations and is in line with our style; aiming for better and constantly bringing surprises--KHPRO.



► MEDIUM AND LARGE SYSTEMS



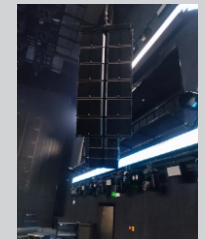
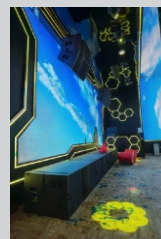
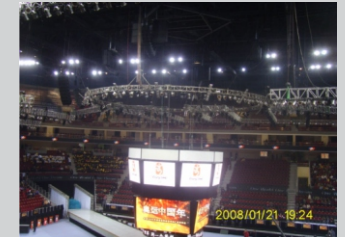
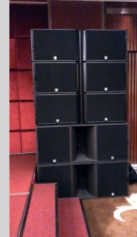
**KH<sup>®</sup>  
PRO**  
坤鴻專業

[Http://www.khpro.cn](http://www.khpro.cn)

Sound is a science. We believe that the more people learn about it, the more the industry will benefit. We have accumulated many years of experience in this industry and we are happy to share it. In fact, we have been manufacturing and installing line array speakers since 2002. And after many years of development, we continue to thrive. This has exceeded our customers' expectations and is in line with our style; aiming for better and constantly bringing surprises - KHpro.

## MEDIUM AND LARGE MOBILE AND FIXED INSTALLATION SYSTEMS

### ► APPLICATIONS



► Technical Specifications 技術指標

Rated Power Aes	功率	1200W/600W/200W	800W/300W/160W	500W	800W/200W	450W/80W	650W
Peak Power	峰值功率	6000W	3000W	1000W	2200W	1500W	1800W
Nominal Impedance	阻抗	8Ω	8Ω/16Ω	8Ω	8Ω/8Ω	8Ω	8Ω
Frequency Response(+/-3db)	頻率響應	40Hz-16KHz -3dB	60Hz-18KHz -3dB	60Hz-18KHz -3dB	42Hz-19KHz -3dB	60Hz-18KHz -3dB	50Hz-18KHz -3dB
Sensitivity(2.83/1m)	靈敏度	105dB	102dB	102dB	102dB	104dB	106dB
Maximum Sp1 Continuous	最大控制聲壓	140dB	138dB	138dB	136dB	132dB	138dB
Maximum Sp1 Peak	峰值聲壓	146dB	142dB		143dB		
Dispersion -6db	覆蓋角度						
Horizontal	水平	90	90	60	70/90/110	110	70/100/非對稱90
Vertical	垂直	0-5	0.25-10	40	0.25-10	10	10/30
Drive Specification	驅動器規格						
Lf Drive	低音	2*15"NEO driver	2*12"NEO driver	1*15"NEO driver	2*12"NEO driver	2*8"NEO driver	1*15"NEO driver
Mf Drive	中音	4*6.5"NEO driver	4*6.5"NEO driver				
Hf Drive	高音	3*3"NEO-CP driver	2*3"NEO-CP driver	1*3"NEO-CP driver	1*4"NEO-CP driver	1*3"NEO-CP driver	1*3"NEO-CP driver
Connectors	接線器方式						
Paralleled Neutrik Speakon	接線器方式	2*8-PA-COM	2*8-PA-COM	2*NL4MP	2*NL4MP	2*NL4MP	2*NL4MP
Enclosure Material	箱體原材	Multi-layer plywood	Multi-layer plywood	Multi-layer plywood	Multi-layer plywood	Multi-layer plywood	Multi-layer plywood
Cabinet Finish	箱體面漆						
Hoisting Set	吊掛裝置	Special hanging	Special hanging	Special hanging	Special hanging	Special hanging	Special hanging
Dimenions (hxwx d)	箱體尺寸	1342 x 438 x 520 mm	1338 x 354 x 400 mm	580 x 430 x 375 mm	950 x 357 x 403 mm	730 x 250 x 482 mm	762 x 424 x 494 mm
Weight (kg)	重量	108Kg	56Kg	20Kg	43Kg	25Kg	33Kg

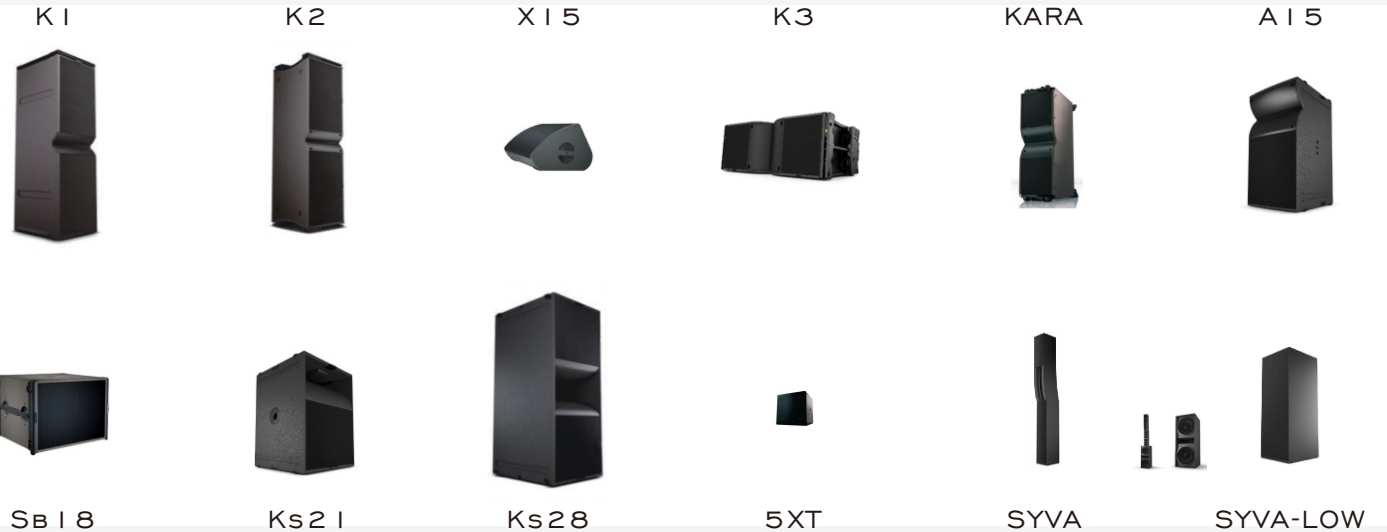
► INTRODUCTION

Features: Waveform technology sound reinforcement system, excellent long-range projection capability, high definition, precise and predictable. Multi-layer birch plywood cabinet, suitable for touring performances and fixed installations. Dedicated adjustable data for digital processors. Full curved line source array adjustable rigging coverage.

Applied to theBar amplification, concerts, theater, indoor and outdoor performances, fixed installation, indoor hall stadium.



Special lifting frame



► Technical Specifications 技術指標

Rated Power Aes	功率	600W	1200W	2000W	100W	750W	800W
Peak Power	峰值功率	1200W	3000W	6000W	300W	1500W	2000W
Nominal Impedance	阻抗	8Ω	8Ω	4Ω	16Ω	8Ω	4Ω
Frequency Response(+/-3db)	頻率響應	35Hz-120Hz -3dB	32Hz-100Hz -3dB	30Hz-100Hz -3dB	96Hz-19KHz -3dB	90Hz-19KHz -3dB	30Hz-120Hz -3dB
Sensitivity(2.83/1m)	靈敏度	98dB	103dB	95dB	102dB	106dB	98dB
Maximum Sp1 Continuous	最大控制聲壓	128dB	136dB	133dB	121dB	138dB	130dB
Maximum Sp1 Peak	峰值聲壓	133dB		142dB			
Dispersion -6db	覆蓋角度						
Horizontal	水平			Omni-directional	110	140	
Vertical	垂直				110	26	
Drive Specification	驅動器規格						
Lf Drive	低音	1*18"NEO driver	1*21"NEO driver	2*18"NEO driver	1*5"NEO driver	6*5"NEO driver	2*15"NEO driver
Mf Drive	中音						
Hf Drive	高音				1*1"NEO-CP driver	3*1.75"NEO-CP driver	
Connectors	接線器方式						
Paralleled Neutrik Speakon	接線器方式	2*NL4MP	2*NL4MP	2*NL4MP	2*NL4MP	2*NL4MP	2*NL4MP
Enclosure Material	箱體原材	Multi-layer plywood	Multi-layer plywood	Multi-layer plywood	Multi-layer plywood	Multi-layer plywood	Multi-layer plywood
Cabinet Finish	箱體面漆						
Hoisting Set	吊掛裝置	Special hanging	Special hanging	Special hanging	Special hanging	Special hanging	Special hanging
Dimenions (hxwx d)	箱體尺寸	750 x 540 x 707 mm	762 x 628 x 569 mm	1342 x 565 x 702 mm	165 x 165 x 165 mm	209 x 144 x 1304 mm	350 x 334 x 849 mm
Weight (kg)	重量	48Kg	49Kg	88Kg	3.5Kg	20Kg	29Kg



**KH<sup>®</sup>  
PRO**  
坤鴻專業

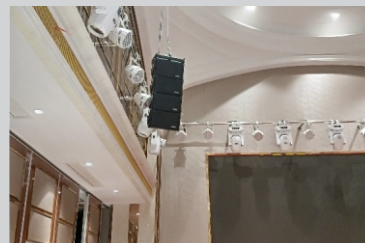
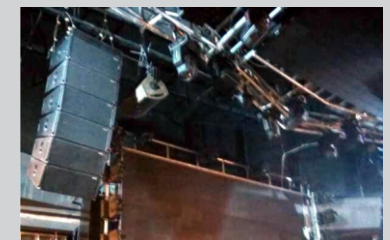
[Http://www.khpro.cn](http://www.khpro.cn)

The pursuit of sound is a science. The more people know about this sound science, the more the industry will benefit. We have accumulated many years of rich experience in large-scale sound systems in this industry, and developed small and medium-sized line array systems, which have been widely used in banquet halls, theaters, conference halls and mobile performances.

After years of development, we continue to thrive. This has exceeded the expectations of our customers; aiming for better and constantly bringing surprises--KHpro.

## SMALL AND MEDIUM-SIZED MOBILE AND FIXED INSTALLATION SYSTEMS

### ▶ APPLICATIONS



► Technical Specifications 技術指標

Rated Power Aes	功率	500W/2000W	500W	1000W	600W	800W	1000W/200W
Peak Power	峰值功率	1000W/4000W	2000W	4000W	1800W	1600W	2000W
Nominal Impedance	阻抗	6Ω/12Ω	8Ω	4Ω	16Ω	8Ω	8Ω
Frequency Response(+/-3db)	頻率響應	50Hz-17KHz -3dB	70Hz-18KHz -3dB	37Hz-90Hz -3dB	100Hz-16KHz -3dB	40Hz-160Hz -3dB	70Hz-16KHz -3dB
Sensitivity(2.83/1m)	靈敏度	102dB	100dB	96dB	100dB	100dB	100dB
Maximum Sp1 Continuous	最大控制聲壓	138dB	132dB	136dB	130dB	128dB	131dB
Maximum Sp1 Peak	峰值聲壓	148dB	139dB	140dB	134dB	132dB	140dB
Dispersion -6db	覆蓋角度						
Horizontal	水平	80/120	80/120		90		60
Vertical	垂直	0-7	0-14		15-30		40
Drive Specification	驅動器規格						
Lf Drive	低音	2*12"NEO driver	2*10"NEO driver	2*18"NEO driver	2*10"NEO driver	2*18" driver	2*12"NEO driver
Mf Drive	中音	1*10"NEO driver	1*8"NEO driver				
Hf Drive	高音	2*3"NEO-CP driver	2*1.4"NEO-CP driver		2*1.4" CP driver		1*1.4" CP driver
Connectors	接線器						
Paralleled Neutrik Speakon	接線方式	2*NL4MP	2*NL4MP	2*NL4MP	2*NL4MP	2*NL4MP	2*NL4MP
Enclosure Material	箱體原材	Multi-layer plywood	Multi-layer plywood	Multi-layer plywood	Multi-layer plywood	Multi-layer plywood	Multi-layer plywood
Cabinet Finish	箱體面漆						
Hoisting Set	吊掛裝置	Special hanging	Special hanging	Special hanging	Special hanging	Special hanging	Special hanging
Dimensions(hxwx d)	箱體尺寸	360 x 1100 x 570 mm	310 x 700 x 460 mm	585 x 920 x 1160 mm	308 x 580 x 410 mm	493 x 580 x 668 mm	706 x 440 x 440 mm
Weight(kg)	重量	58Kg	34Kg	98Kg	22Kg	42Kg	33Kg

► INTRODUCTION

Features: Waveform technology sound reinforcement system, excellent projection capability, high definition, precise and predictable. Multi-layer birch plywood cabinet, suitable for small and medium-sized mobile performances and fixed installations. Adjustable data with dedicated processor. Complete curved line source array adjustable rigging and mobile support frame.

Applied to theBar amplification, concerts, theater, indoor and outdoor performances, fixed installation, indoor hall stadium.



J8/J12

V8/V12

B22

Q1/Q7

Q-SUB

T24N



S805/S830

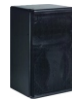
Ls600

Ls18

VERA10

S15

S30



► Technical Specifications 技術指標

Rated Power Aes	功率	300W	600W	1200W	400W/100W	500W	1600W
Peak Power	峰值功率	600W	1200W	2000W	1000W	1000W	3000W
Nominal Impedance	阻抗	16Ω	6Ω	8Ω	16Ω	8Ω	4Ω
Frequency Response(+/-3db)	頻率響應	80Hz-18KHz -3dB	40Hz-110Hz -3dB	40Hz-120Hz -3dB	70Hz-16KHz -3dB	40Hz-150Hz -3dB	35Hz-200Hz -3dB
Sensitivity(2.83/1m)	靈敏度	100dB	95dB	96dB	100dB	93dB	95dB
Maximum Sp1 Continuous	最大控制聲壓	130		128	130dB	123dB	131dB
Maximum Sp1 Peak	峰值聲壓	136		132	136dB	130dB	140dB
Dispersion -6db	覆蓋角度		Omni-directional	Omni-directional			
Horizontal	水平	120°			120		Omni-directional
Vertical	垂直	5-30°			10		
Drive Specification	驅動器規格						
Lf Drive	低音	1*8"NEO driver	15"cone driver	18"NEO driver	1*10"NEO driver	1*15"NEO driver	2*15"NEO driver
Mf Drive	中音						
Hf Drive	高音	1*1"NEO-CP driver			2*1"NEO-CP driver		
Connectors	接線器						
Paralleled Neutrik Speakon	接線方式	2*NL4MP	2*NL4MP	2*NL4MP	2*NL4MP	2*NL4MP	2*NL4MP
Enclosure Material	箱體原材	Multi-layer plywood	Multi-layer plywood	Multi-layer plywood	Multi-layer plywood	Multi-layer plywood	Multi-layer plywood
Cabinet Finish	箱體面漆						
Hoisting Set	吊掛裝置	Special hanging	Special hanging	Special hanging	Special hanging	Special hanging	Special hanging
Dimensions(hxwx d)	箱體尺寸	406 x 250 x 219 mm	435 x 688 x 528 mm	510 x 675 x 775 mm	275 x 500 x 355 mm	500 x 446 x 560 mm	706 x 446 x 800 mm
Weight(kg)	重量	13Kg	30Kg	55Kg	21Kg	28Kg	48Kg



**KH<sup>®</sup>  
PRO**  
坤鴻專業

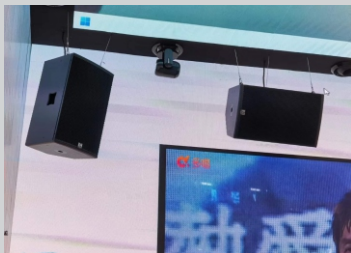
[Http://www.khpro.cn](http://www.khpro.cn)

We have been pursuing the science of sound. We believe that inheritance and innovation will benefit the industry more. Years of rich experience in the industry have enabled us to consider more carefully when designing and producing fixed installation speakers.

After years of development, we continue to grow and exceed the expectations of our customers; with the goal of being better, we continue to bring surprises - Khpro.

## FIXED INSTALLATION SYSTEM

### ▶ APPLICATIONS



► Technical Specifications 技術指標

Rated Power Aes	功率	500W	500W	800W	800W	1200W	1200W
Peak Power	峰值功率						
Nominal Impedance	阻抗	8Ω	8Ω	8Ω	8Ω	4Ω	4Ω
Frequency Response(+/-3db)	頻率響應	80Hz-16KHz -3dB	80Hz-16KHz -3dB	60Hz-19KHz -3dB	42Hz-100Hz -3dB	42Hz-180Hz -3dB	40Hz-100Hz -3dB
Sensitivity(2.83/1m)	靈敏度	99dB	99dB	100dB	99dB	100dB	101dB
Maximum Sp1 Continuous	最大控制聲壓	128dB	130dB	132dB	120dB	128dB	130dB
Maximum Sp1 Peak	峰值聲壓						
Dispersion -6db	覆蓋角度						
Horizontal	水平	50	90	70			
Vertical	垂直	80	50	40			
Drive Specification	驅動器規格						
Lf Drive	低音	1*15"cone driver	1*15"cone driver	1*15"cone driver	18"cone driver	2*18"cone driver	2*18"cone driver
Mf Drive	中音			1*10"cone driver			
Hf Drive	高音	1*1.4 CP driver	1*1.4 CP driver	1*1"CP driver			
Connectors	接線器方式						
Paralleled Neutrik Speakon	接線方式	2*NL4MP	2*NL4MP	2*NL4MP	2*NL4MP	2*NL4MP	2*NL4MP
Enclosure Material	箱體原材	Multi-layer plywood	Multi-layer plywood	Multi-layer plywood	Multi-layer plywood	Multi-layer plywood	Multi-layer plywood
Cabinet Finish	箱體面漆						
Hoisting Set	吊掛裝置	Special hanging	Special hanging	Special hanging	Special hanging	Special hanging	Special hanging
Dimenions (hxwx d)	箱體尺寸	429 x 690 x 414 mm	690 x 471 x 443 mm	1066 x 560 x 780 mm	690 x 561 x 595 mm	1049 x 587 x 727 mm	1066 x 561 x 780 mm
Weight(kg)	重量	31Kg	32.5Kg	77Kg	45Kg	82Kg	87Kg

XD15      FI5+      H3+      S18+      Sx218      S218+

► INTRODUCTION

Features: Classic point source horn design, array sound waves remain consistent; strong magnetic monomer high power output, versatile and flexible matching. Equipped with a dedicated processor.

Application: Indoor fixed installation of sound reinforcement/small and medium-sized stage monitoring, main sound reinforcement and auxiliary sound supplement audio display in conference halls, concert halls, bars, party rooms, etc.



DEDICATED PROCESSORS



► Technical Specifications 技術指標

Rated Power Aes	功率	600W	350W/150W	800W	200W	500W	400W
Peak Power	峰值功率	1500W	1500W		400W		
Nominal Impedance	阻抗	8Ω	4Ω	6Ω	6Ω	6Ω	8Ω
Frequency Response(+/-3db)	頻率響應	120Hz-18KHz -3dB	120Hz-18KHz -3dB	60Hz-100Hz -3dB	100Hz-16KHz -3dB	60Hz-16KHz -3dB	65Hz-16KHz -3dB
Sensitivity(2.83/1m)	靈敏度	102dB	102dB	102dB	100dB	102dB	100dB
Maximum Sp1 Continuous	最大控制聲壓	132dB	130dB	128dB			
Maximum Sp1 Peak	峰值聲壓						
Dispersion -6db	覆蓋角度					100-50° H x 55° V	
Horizontal	水平	75	65		100-50°		55°
Vertical	垂直	40	40		55°		100-50°
Drive Specification	驅動器規格						
Lf Drive	低音	1*12"cone driver	1*15"cone driver	18"cone driver	1*10"cone driver	15"cone driver	12"cone driver
Mf Drive	中音	1*6.5"cone driver	1*6.5"cone driver				
Hf Drive	高音	1*1 CP driver	1*1 CP driver		1*1"exit CP driver	1.4"exit CP driver	1.4"exit CP driver
Connectors	接線器方式						
Paralleled Neutrik Speakon	接線方式	2*NL4MP	2*NL4MP	2*NL4MP	2*NL4MP	2*NL4MP	1*cable
Enclosure Material	箱體原材	Multi-layer plywood	Multi-layer plywood	Multi-layer plywood	Multi-layer plywood	Multi-layer plywood	Multi-layer plywood
Cabinet Finish	箱體面漆						48KHz DSP & 1*600W AP
Hoisting Set	吊掛裝置	Special hanging	Special hanging	Special hanging	Special hanging	Special hanging	Special hanging
Dimenions (hxwx d)	箱體尺寸	799 x 556 x 780 mm	442 x 827 x 430 mm	1066 x 572 x 936 mm	515 x 316 x 277 mm	675 x 434 x 368mm	555 x 360 x 330mm
Weight(kg)	重量	71Kg	36Kg	78Kg	15Kg	29Kg (63.8 lbs)	25Kg



**KH<sup>®</sup>  
PRO**  
坤鴻專業

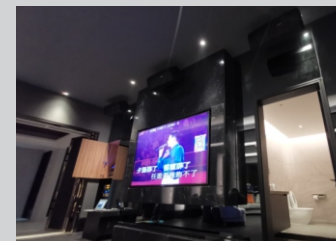
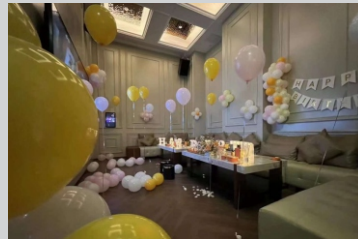
[Http://www.khpro.cn](http://www.khpro.cn)

We have been pursuing better near-field sound. We believe that inheritance and innovation will benefit the industry more. Years of rich industry experience have enabled us to consider more beauty and delicacy when designing and producing KTV and cinema speakers.

After years of development, we continue to grow and exceed our customers' expectations; with the goal of better, we continue to bring surprises--KHpro.

## KTV&CINEMA SYSTEM

### ► APPLICATIONS



► Technical Specifications 技術指標

Rated Power Aes	功率	400W	500W	600W	600W	300W	350W
Peak Power	峰值功率	1600W	1500W	1800W	2400W	1200W	1400W
Nominal Impedance	阻抗	8Ω	8Ω	8Ω	8Ω	8Ω	8Ω
Frequency Response(+/-3db)	頻率響應	60Hz-19KHz -3dB	65Hz-19KHz -3dB	60Hz-19KHz -3dB	35Hz-250Hz -3dB	72Hz-19KHz -3dB	71Hz-19KHz -3dB
Sensitivity(2.83/1m)	靈敏度	98dB	96dB	96dB	95dB	95dB	96dB
Maximum Sp1 Continuous	最大控制聲壓						
Maximum Sp1 Peak	峰值聲壓						
Dispersion -6db	覆蓋角度						
Horizontal	水平	90°	70°	80°		70°	70°
Vertical	垂直	70°	60°	70°		80°	60°
Drive Specification	驅動器規格						
Lf Drive	低音	1*12"cone driver	12"ferrite driver	15"ferrite driver	18"ferrite driver	10"ferrite driver	12"ferrite driver
Mf Drive	中音						
Hf Drive	高音	1*1.75" exit-CP driver	2"nd driver	2"nd driver		1.5"ND driver	2"ND driver
Connectors	接線器						
Paralleled Neutrik Speakon	接線方式	2*NL4MP	2*NL4MP	2*NL4MP	2*NL4MP	2*NL4MP	2*NL4MP
Enclosure Material	箱體原料						
Cabinet Finish	箱體面漆						
Hoisting Set	吊掛裝置						
Dimenions (hxwx d)	箱體尺寸	600 x 363 x 406.5 mm	600 x 360 x 410 mm	680 x 410 x 460 mm	540 x 600 x 700 mm	524 x 300 x 340 mm	600 x 350 x 382 mm
Weight(kg)	重量	24.5Kg	21.6Kg	26.6Kg	38.8Kg	14.5Kg	18.6Kg
		C MAX 4112	KP-052	KP-053	KP-9018	KP-6050	KP-6052

► INTRODUCTION

Features: Compact passive system, patented design, wide bandwidth, high power output and flexible matching.

Application: Karaoke, indoor fixed sound reinforcement/small stage monitoring, home theater, etc., main sound reinforcement and auxiliary sound supplement audio display.



專用單杆吊架



MCPS345

MCPS245

C4290

C1650

THX-12

MS1575F

► Technical Specifications 技術指標

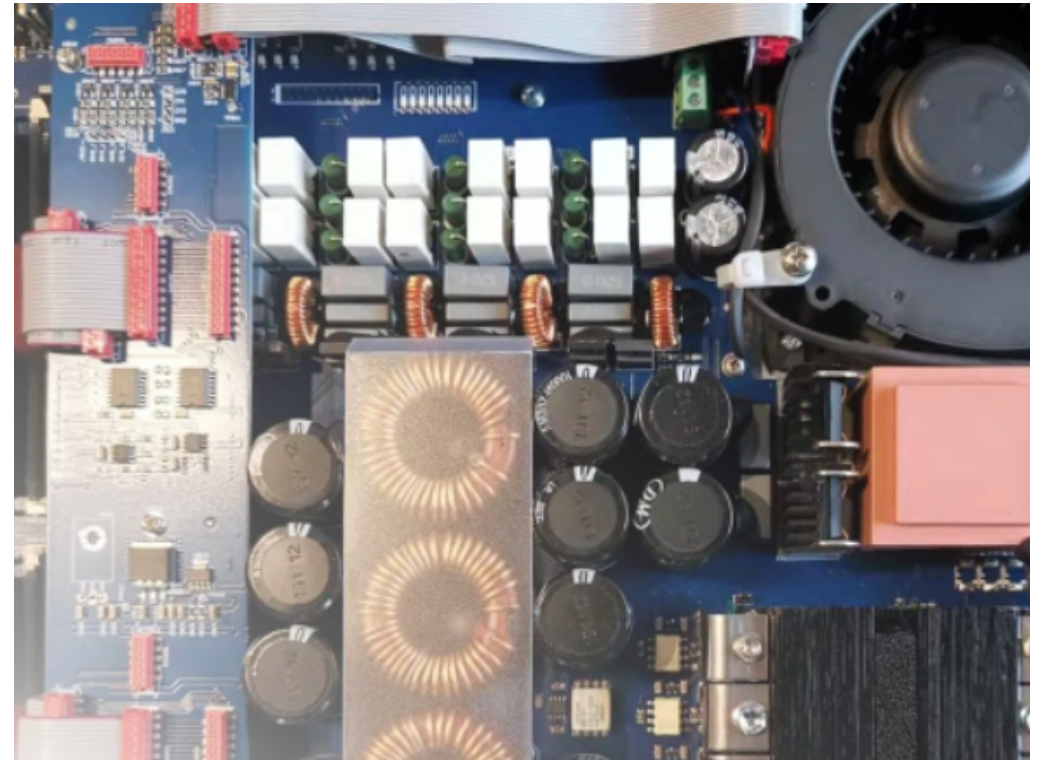
Rated Power Aes	功率	100W	80W	100W	60W	500W	800W
Peak Power	峰值功率	200W	160W	150W	90W	1000W	1600W
Nominal Impedance	阻抗	8Ω	8Ω	4Ω	4Ω		
Frequency Response(+/-3db)	頻率響應	75Hz-23KHz -3dB	75Hz-23KHz -3dB	60Hz-35KHz -3dB	70Hz-25KHz -3dB	30Hz-500Hz -3dB	28Hz-500Hz -3dB
Sensitivity(2.83/1m)	靈敏度	93dB	90dB	87dB	90dB		
Maximum Sp1 Continuous	最大控制聲壓	116dB	112dB	111dB	110dB	117dB	124dB
Maximum Sp1 Peak	峰值聲壓						
Dispersion -6db	覆蓋角度						
Horizontal	水平	120	120	142	140	360	360
Vertical	垂直	120	120	111	140	360	360
Drive Specification	驅動器規格						
Lf Drive	低音	3*4.5"cone driver	2*4.5"cone driver	2*6.5"cone driver	2*6.5"cone driver	1*12"cone driver	1*15"cone driver
Mf Drive	中音						
Hf Drive	高音	2*3" cone driver	1*3" cone driver	1*CT3球頂高音單元	1*CT3球頂高音單元		
Connectors	接線器						
Paralleled Neutrik Speakon	接線方式	按壓式金屬接線器	按壓式金屬接線器	按壓式金屬接線器	按壓式金屬接線器	RCA&XLR輸入 220V有源	RCA&XLR輸入 220V有源
Enclosure Material	箱體原料						
Cabinet Finish	箱體面漆					黑色木紋PVC皮	黑色木紋PVC皮
Hoisting Set	吊掛裝置	專用吊掛	專用吊掛	專用吊掛			
Dimenions (hxwx d)	箱體尺寸	184 x 121 x 820 mm	184 x 119 x 501 mm	243 x 122 x 559 mm	229mm 直徑 131mm 高度	407 x 485 x 444 mm	537 x 677 x 590 mm
Weight(kg)	重量	7.8Kg	6.7Kg	8.1Kg	2.3Kg	28.6Kg	48.5Kg



[Http://www.khpro.cn](http://www.khpro.cn)

**KHpro understands that different models of speakers need different tones because of the occasions they are used! Amplifiers are very different because of the circuits, and we have benefited a lot from years of experience. Through communication with users and engineering technicians, we are able to master the secrets. Find out the audio requirements pursued by the industry in various aspects, so that we can manufacture distinctive products to meet these needs!**

**Aim for better and keep bringing surprises--KHpro.**



## ELECTRONIC PRODUCT SYSTEM

### ▶ APPLICATIONS



► INTRODUCTION

Features:

- \*Compact 1U body design
- \*Patented technology legendary sound
- \*High efficiency output of the whole machine, low temperature operation
- \*Class D amplification technology
- \*Comprehensive protection circuit design

Application:

Mobile performances, indoor and outdoor fixed installation sound reinforcement, stage monitoring, conference and background music, etc.

**Class D Multi-Channel Power Amplifier**



MA4.10Q(DSP)



K3



LA4X(DSP&DANTE)

► Technical Specifications 技術指標

型號	D4100	D4130	D4160
功率(8Ω)W	4*1000W	4*1300W	4*1600W
(4Ω)W	4*1700W	4*2200W	4*2600W
重量	16KG	17KG	18KG
總諧波失真@4Ω		<0.08%	
頻率響應		20Hz-20KHz: <0.03%	
信噪比		>100dB	
轉換速率		>30V/us	
通道隔離		>80dB@1KHz	
阻尼系數		200-1000(可調)	
輸入靈敏度		0-9dB	
THD+N		<0.02% @ 1/2 full power	
輸入阻抗		30KΩ平衡	
冷却方式		空氣對流由前到后	
特別功能		內置DSP,多機聯機,數字傳輸	
電源規格		160-260V 50-60Hz	
尺寸		483 x 88 x 455 mm(2U)	

► INTRODUCTION

Features:

- \*Class D amplifier circuit.
- \*Output channel is equipped with 8-band parametric EQ.
- \*Output channel is equipped with full-function compressor.
- \*Output channel is equipped with 0-80ms delay. \*16 modes can be stored.
- \*The machine has a full-function menu that can be set through the PC interface.

Application:

Karaoke, indoor and outdoor fixed sound reinforcement, mobile performances and background music audio display, etc.

**Class D Multi-Channel Power Amplifier**



(DSP)

► Technical Specifications 技術指標

型號	MA4.10Q With-DSP	LA4X With-DSP	M30D	K3
功率(8Ω)W	4*1000W	4*1000W	2*900W	2*1400W
(4Ω)W	4*1800W	4*1000W	2*1500W	2*2600W
重量	8.6KG	9.8KG	7.5KG	8KG
總諧波失真@4Ω		1kHz: <0.3%		
頻率響應		20Hz-20KHz: <0.03%		
信噪比		>106dB		
轉換速率		>50V/us		
通道隔離		>70dB@1KHz		
阻尼系數		>5000 @ 100Hz		
輸入靈敏度		1.94 /8dBu		
THD+N		<0.05% @ 1/2 full power		
輸入阻抗		10KΩ平衡		
冷却方式		空氣對流由前到后		
IMD		<0.02%, 8Ω@1W		
電源規格		200-240V 50-60Hz		
尺寸		483 x 44.45 x 358 mm(1U)		

**Class TD Multi-Channel Power Amplifier**



(DSP&DANTE)

► INTRODUCTION

Features:

- \*Adopt ADI 64bit floating point DSP (96KHz/48KHz).
- \*Special signal input matrix.
- \*Special front panel 4.3-inch LCD touch screen control screen.
- \*Special 2 \*RJ45 (Ethernet port) input/parallel connection.
- \*Top sound quality, TD analog amplifier circuit.
- \*Output channel has 7-band parametric EQ.
- \*Output channel has full-function compressor.
- \*Output channel has 0-80ms delay. \*16 modes can be stored.
- \*This machine has a full-function menu, which can be set through the PC interface.

Applications:

Karaoke, indoor and outdoor fixed sound reinforcement, mobile performances and background music audio display, etc.

► Technical Specifications 技術指標

型號	M40D-DSP	M70D-DSP	M60Q-DSP	M100Q-DSP
功率(8Ω)W	2*1300W	2*2100W	4*900W	4*1500W
(4Ω)W	2*2500W	2*2500W	4*1800W	4*3000W
重量	10KG	11KG	12KG	13KG
總諧波失真@4Ω		<0.1%		
頻率響應		20Hz-20KHz: <0.03%		
信噪比		>112dB		
轉換速率		>50V/us		
通道隔離		>80dB@1KHz		
阻尼系數		>1000@100Hz		
輸入靈敏度		1.2V		
電子調節		電子數字控制		
輸入阻抗		30KΩ平衡		
冷却方式		空氣對流由前到后		
特別功能		內置DSP,多機聯機,數字傳輸		
電源規格		180-240V 50-60Hz		
尺寸		488 x 47 x 448 mm(2U)		

► INTRODUCTION

Features:

\*Patented Class-I topology circuit with low power consumption, excellent sound quality, high stability, and extremely reliable performance.

\*Professional audio processing technology: Coupled isolated linear VCA volume control circuit with premium materials.

\*Audio coupler with dedicated audio capacitors.

\*Protection features: Power-on protection, power-off protection, load open-circuit protection, short-circuit protection, DC output cutoff protection, overheat protection, input overload protection, and power supply surge current protection.

Applications:

Fixed indoor/outdoor sound reinforcement, mobile performances, background music audio display, etc.

**New generation GaN multi-channel power amplifier**



► Technical Specifications 技術指標

型號	GaN-2080	GaN-2130	GaN-2200	GaN-4080	GaN-4140
功率(8Ω)W (4Ω)W	2*800W 2*1450W	2*1300W 2*2300W	2*2000W 2*3600W	4*800W 4*1450W	4*1450W 4*2530W
重量	6.2KG	6.2KG	6.2KG	7.3KG	7.3KG
總諧波失真@4Ω			20-20KHz: <0.1%		
頻率響應			5Hz-20KHz: <0.03%		
信噪比			>110dB		
轉換速率			>50V/us		
通道隔離			>70dB@1KHz		
阻尼系數			>350 @ 1KHz		
輸入阻抗			10KΩ平衡		
冷却方式			空氣對流由前到后		
靈敏度			23dB 26dB 29dB 32dB 35dB 38dB 41dB 44dB		
電源規格			200-240V 50-60Hz		
尺寸			483 x 88 x 330 mm (2U)		

► Technical Specifications 技術指標

型號	4K13	4K16	2K24
功率(8Ω)W (4Ω)W (2Ω)W	4*1300W 4*2200W 4*2600W	4*1600W 4*2600W 4*3000W	2*2400W 2*3800W 2*4300W
重量	16.2KG	16.5KG	15.2KG
總諧波失真@4Ω		<0.01%	
頻率響應		20Hz-25KHz: <0.03%	
信噪比		>100dB	
轉換速率		>40V/us	
通道隔離		>80dB@1KHz	
阻尼系數		200-1000(可調)	
靈敏度		41\38\35\32dB	
THD+N		<0.02% @ 1/2 full power	
輸入阻抗		20KΩ / 10KΩ	
冷却方式		空氣對流由前到后	
特別功能		開關機保護、過熱保護、輸入過載保護、電源浪涌電流保護等	
電源規格		160-260V 50-60Hz	
尺寸		483 x 88 x 475 mm (2U)	

► INTRODUCTION

Features:

\* Top sound quality, TD analog amplifier circuit.

\* Input adjustable gain 32-41dB. \* Output channel adjustable damping coefficient.

\* Power-on protection, power-off protection, load open circuit protection, short circuit protection, DC output cutoff protection, overheat protection, input overload protection, power supply surge current protection, etc.

Applications:

Karaoke, indoor and outdoor fixed sound reinforcement, mobile performances and background music audio display, etc.

**Class TD Multi-Channel Power Amplifier**



► INTRODUCTION

Features:

\* Compact 2U body design

\* Optimized CLASS-H circuit

\* Complete protection design

\* 1.4V/0.775V input sensitivity selection

\* Dual tunnel radiator with variable speed fan

Application:

Karaoke, indoor fixed installation sound reinforcement/small stage monitoring sound reinforcement, conference and background music sound reinforcement.

**Class H Power Amplifier**



► Technical Specifications 技術指標

型號	MX-7000	MX-9000	MX-12000
功率(8Ω)W (4Ω)W	2*600W 2*900W	2*800W 2*1200W	2*1000W 2*1600W
重量	14.5KG	18.KG	19.5KG
總諧波失真@4Ω		1kHz: <0.01%	
頻率響應		20Hz-20KHz: <0.03%	
信噪比		>100dB	
增益		31-36dB	
阻尼系數		>200 @ 8Ω	
輸入靈敏度		0.775 or 1.4V	
頻響範圍		20Hz-20KHz +0/-0.5dB	
輸入阻抗		20KΩ平衡	
冷却方式		空氣對流由前到后	
功放保護方式		短路、空載、開/關機噪音、無線電干擾	
電源規格		200-240V 50-60Hz	
尺寸		483 x 88 x 294 mm (2U)	

► INTRODUCTION

Features:

- \*Compact multi-channel DSP amplifier speaker back panel
- \*Optimized Class D amplifier circuit
- \*Complete protection design
- \*Full-function DSP data selection
- \*Dual tunnel radiator with variable speed fan

Application:

Mobile performances, indoor fixed installation sound reinforcement/small stage monitoring sound reinforcement, conference and background music sound reinforcement.

Class D Backplane Power Amplifier



AP1-600



AP3-124

► Technical Specifications 技術指標

型號	AP1-600	AP3-124
功率(8Ω)W	1*600W	2*400W+1200W
(4Ω)W	1*900W	2*750W+2000W
重量	3.6KG	6KG
輸入	1*卡龍公母, 1*音量, 1*USB	1*卡龍公母, 2*音量, 1*USB
輸出	1*電纜OUT	3*電纜OUT, 2*NL4
尺寸	345*155*95MM	360*280*95MM
DSP		
採樣率	48KHZ	
頻率響應	10Hz-40KHz: <0.5%	
動態範圍	>110dB	
最大延遲	20毫秒	
增益	0-60dB	
EQ數量	輸入: 6段, 輸出: 6段	
參數	Q:0.2-36, 頻率:20hz-20khz;最大增益:+12db,-24db 延遲:370毫秒,交叉過濾器:Linkwitz-Riley 12/18/24dB 限幅器和壓縮機:Threshold +0dBu to -19dBu	

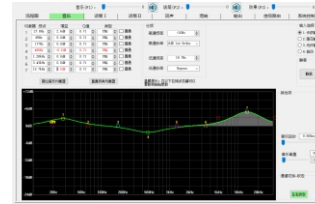
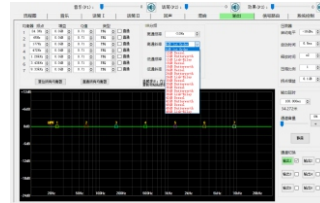
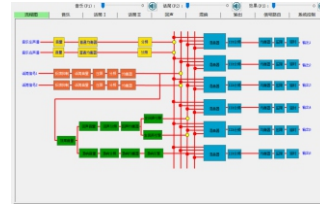
► Technical Specifications 技術指標

輸入通道數	電子平衡 4路平衡及1組數字光纖
輸出通道數	電子平衡 6路平衡
採樣率	96kHz 內部
頻率響應	<0.8dB 20Hz - 32kHz
動態範圍	116dB 20Hz - 20kHz, 未加權
最大電平	+20dBu 進入 600 歐姆負載
失真	<0.01% @ 1kHz, +10dBu
均衡器	濾波器: 輸入 8 個/輸出 9 個
分頻濾波器	6/12/18/24/48dB 每倍頻程
限幅器	閾值 +22dBu 至 -10dBu
聯機	RS232+USB免驅
輸入電壓	90Hz - 240V, 50-60Hz
尺寸	44 x 482 x 305mm
重量	3.9kg



Dk2

AUDIO MANAGEMENT SYSTEM



專利號: ZL 2010 3 0224725.1



K-60/K-10

介紹 Introduction

Features:

1. Professional-grade Architecture & Craftsmanship  
Full-processor professional architecture, 4-layer gold-plated PCB, wide dynamic range (116dB), fully compliant with industry standards for high-end processors.
2. Anti-interference Protection  
Four balanced inputs and six balanced outputs are equipped with anti-interference protection devices for enhanced impact resistance.
3. Multiple Input Options  
Music supports XLR balanced input, RCA single-ended input, and digital optical input, with free selection or automatic mode switching.
4. Classic Mic Input  
Independent adjustment for two mic inputs, featuring classic balanced line input with gain control.
5. Precise Level Indicators  
Quick mute buttons for input/output/music/mic/effects, with accurate level indicators, input CLIP indicator, and output LIMIT activation indicator.
6. All-pass Filters  
All channels feature 1st/2nd-order all-pass filters, parametric EQ, and IIR crossover to meet various tuning requirements.
7. Built-in Echo & Reverb Processing  
Professional full-function dual echo and reverb processing for demanding Karaoke and performance needs.
8. Full-featured Mixing  
Comprehensive mixing capabilities; each output can route any input, echo, or reverb with adjustable routing levels.
9. Wireless Control  
Pioneering external WiFi module for wireless control, RS232 and driver-free USB control interfaces, multi-function IR remote.
10. Wide-voltage Power Design  
Stable switching power supply (90-240V 50-60Hz) ensures normal operation under varying voltages.

Applications:

Indoor/outdoor fixed installation PA systems, conferences, exhibitions, background music, and KTV party room audio management & display.

► Technical Specifications 技術指標

頻率範圍	730-870MHz
可調信道數	200
振蕩方式	鎖相環頻率合成(PLL)
接收方式	超外差二次變頻
接收靈敏度	-95dBm 到 -65dBm
分集方式	雙調諧真分集自動選訊
音頻響應	40-18000Hz
失真	<0.5%
信噪比	>100dB
音頻輸出	平衡輸出和不平衡輸出
發射功率	低功率3mW, 高功率30mW
調制方式	調頻(FM)
電池規格	5號AA
電源消耗	200V-240V 50-60Hz
尺寸	<10W
重量	483x260x44.5(1U) 2.6Kg

► INTRODUCTION

Features:

1. True diversity receiver, four-channel independent selection system. It can minimize the occurrence of frequency cutoff.
2. Four-channel independent AFS frequency automatic search function can quickly scan and lock the frequency with the least interference in the working environment.
3. The receiver and transmitter use IR infrared frequency matching technology, one-key synchronization code matching.
4. Professional performance-level phase locking circuit, combined with noise lock squelch control and digital pilot technology, when the transmitter is turned off, the pilot control mutes the AF signal to suppress noise, and mutes the corresponding receiver at the same time. Ensure effective blocking of interference signals.
5. The backlit LED display indicates the working status of RF and AF signal strength, battery status, diversity channel indication (A/B), frequency, frequency group/channel, etc.
6. The true diversity wireless system is designed for touring and fixed installation purposes, provide

Application:

Karaoke, indoor fixed sound reinforcement/stage performance sound reinforcement, conference and background music sound reinforcement.

U-939  
U-969



U-1022



U-1024



UHF True Diversity Wireless Microphone

► INTRODUCTION

Features:

\*Complete audio processor solution, capable of providing excellent sound quality. It is a speaker processor based on DSP technology, high-performance AKM, A/D, AK5392, 3 24-bit high-precision DSPs.

\*2/4 channel input with EQ, compression and delay, 4/8 channel output with frequency division filtering, EQ, compression and delay, etc.

Application:

Indoor and outdoor fixed sound reinforcement systems, conference and exhibition sound display.

DP24/DP26/DP28/DP48



Multi-channel digital speaker processor

Multi-channel filter power supply



1015K/1008K

KP-8



16-channel signal switcher

[Http://www.khpro.cn](http://www.khpro.cn)



**morgan sound**

PROFESSIONAL AUDIO SYSTEM

Kh Professional Audio Electric INC  
NO. 1, san- ROAD, Da Sha Tou, Yue Xiu ,Guangzhou.  
GD, CHINA  
E-mail: khprosound@126.com

